

E4 XLS+ Single Channels

Simple, Versatile and Secure



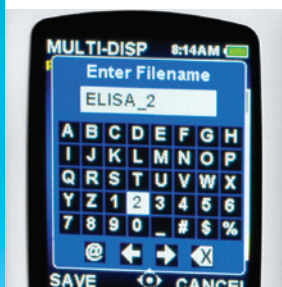
Easy operation

The E4 XLS+ works the way you think. Its color graphics, large screen and precision joystick have revolutionized electronic pipetting. The simple interface makes adjusting settings quick and easy.



App master

For serial dilutions, filling plates, pipetting unusual liquids and performing complex pipetting steps, the E4's versatile range of pipetting modes offer maximum convenience.



Save your protocols

Store multiple custom protocols in the E4's on-board memory. Simultaneously review and select your protocols with a simple movement of the joystick. No more re-entering protocols over and over again!



GLP/GMP security

Reduce compliance risks! Onboard service data is extremely secure and quick to access. Avert calibration compliance errors by password protecting access to service interval alarms. Minimize pipetting SOP deviations by locking protocol settings.



E4 XLS+ Electronic Pipette

A New Standard

The Rainin E4™ XLS+™ is loaded with features, functionality and a revolutionary approach to navigation that redefines simplicity and control in pipetting. The contoured body, even balance and Rainin's legendary precision and accuracy combine to an extraordinary pipetting experience.

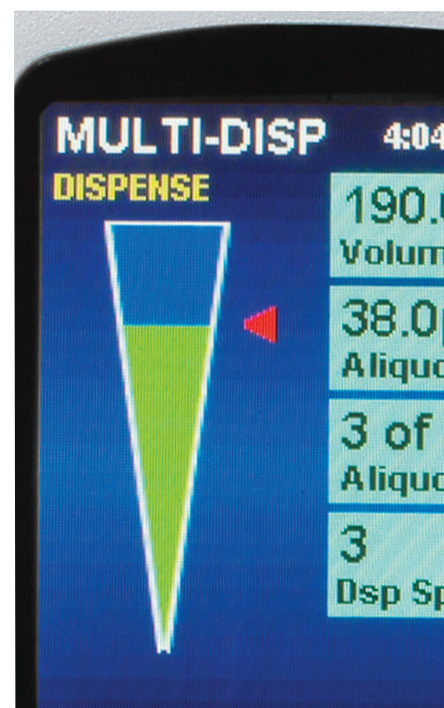
METTLER TOLEDO



E4 XLS+ Electronic Pipette

Extraordinary Performance and Comfort

- Standard modes include Basic pipetting, Multi-Dispense and Mix
- Advanced modes include sequential volume programming for complex protocols, titration, dilution and reverse mode pipetting
- Independently control aspirate, dispense and mix speeds for challenging liquids
- Optional blowout and automatic dispense settings for precision pipetting protocols
- Password protect access to pipette settings for GLP security
- Save your favorite protocols
- Simple or complex: configure the E4 for any task
- FPLC in a tip: on board PureSpeed™ sample preparation protocol
- Multilingual display and on-screen help
- Easily accessible service records and alarms
- RFID enabled for advanced asset management
- Rapid Charge Stand charges three pipettes simultaneously in one hour
- LTS-equipped models feature Rainin's patented cylindrical shaft and tip design – up to 80% lower ejection force than traditional systems



E4 XLS+ in Multi-Dispense Mode

Technical Data

Specifications

| Model | Volume (µL) | Increment (µL) | Accuracy | | Precision | |
|------------------------------|-------------|----------------|----------|--------|-----------|--------|
| | | | % | µL (±) | % | µL (±) |
| E4-10 XLS+, SE4-10XLS+ | 1,0 | 0,01 | 2,5 | 0,025 | 1,2 | 0,012 |
| | 5,0 | | 1,5 | 0,075 | 0,6 | 0,03 |
| | 10,0 | | 1,0 | 0,1 | 0,4 | 0,04 |
| E4-20XLS+, SE4-20 XLS+ | 2 | 0,02 | 7,5 | 0,15 | 2,0 | 0,04 |
| | 10 | | 1,5 | 0,15 | 0,5 | 0,05 |
| | 20 | | 1,0 | 0,2 | 0,3 | 0,06 |
| E4-100XLS+, SE4-100XLS+ | 10 | 0,1 | 3,5 | 0,35 | 1,0 | 0,1 |
| | 50 | | 0,8 | 0,4 | 0,24 | 0,12 |
| | 100 | | 0,8 | 0,8 | 0,15 | 0,15 |
| E4-200XLS+, SE4-200XLS+ | 20 | 0,2 | 2,5 | 0,5 | 1,0 | 0,2 |
| | 100 | | 0,8 | 0,8 | 0,25 | 0,25 |
| | 200 | | 0,8 | 1,6 | 0,15 | 0,3 |
| E4-300XLS+, SE4-300XLS+ | 30 | 0,2 | 2,5 | 0,75 | 1,0 | 0,3 |
| | 150 | | 0,8 | 1,2 | 0,25 | 0,375 |
| | 300 | | 0,8 | 2,4 | 0,15 | 0,45 |
| E4-1000XLS+, SE4-1000XLS+ | 100 | 1 | 3,0 | 3,0 | 0,6 | 0,6 |
| | 500 | | 0,8 | 4,0 | 0,2 | 1,0 |
| | 1000 | | 0,8 | 8,0 | 0,15 | 1,5 |
| E4-2000XLS+, SE4-2000XLS+ | 200 | 2 | 3,0 | 6,0 | 0,6 | 1,2 |
| | 1000 | | 0,8 | 8,0 | 0,2 | 2,0 |
| | 2000 | | 0,8 | 16,0 | 0,12 | 2,4 |
| *E4-5000XLS, *SE4-5000XLS | 500 | 5 | 2,4 | 12,0 | 0,6 | 3,0 |
| | 2500 | | 0,6 | 15,0 | 0,2 | 5,0 |
| | 5000 | | 0,6 | 30,0 | 0,16 | 8,0 |
| *E4-10MLXLS, *SE4-10MLXLS | 1 mL | 10 | 5,0 | 50,0 | 0,6 | 6,0 |
| | 5 mL | | 1,0 | 50,0 | 0,2 | 10,0 |
| | 10 mL | | 0,6 | 60,0 | 0,16 | 16,0 |
| *E4-20MLXLS | 2 mL | 20 | 5,0 | 100,0 | 0,6 | 12,0 |
| | 10 mL | | 1,0 | 100,0 | 0,2 | 20,0 |
| | 20 mL | | 0,6 | 120,0 | 0,16 | 32,0 |

Ordering Information

| MT-Order No. LTS | Description | MT-Order No. Traditional | Description | Volume Range |
|------------------|-------------|--------------------------|--------------|---------------|
| 17014484 | E4-10XLS+ | 17014491 | SE4-10XLS+ | 0,5–10 µL |
| 17014487 | E4-20XLS+ | 17014494 | SE4-20XLS+ | 2–20 µL |
| 17014483 | E4-100XLS+ | 17014490 | SE4-100XLS+ | 10–100 µL |
| 17014486 | E4-200XLS+ | 17014493 | SE4-200XLS+ | 20–200 µL |
| 17014488 | E4-300XLS+ | 17014495 | SE4-300XLS+ | 20–300 µL |
| 17014482 | E4-1000XLS+ | 17014489 | SE4-1000XLS+ | 100–1000 µL |
| 17014485 | E4-2000XLS+ | 17014492 | SE4-2000XLS+ | 200–2000 µL |
| 17012312 | *E4-5000XLS | 17012353 | *SE4-5000XLS | 500–5000 µL |
| 17012313 | *E4-10MLXLS | 17012354 | *SE4-10MLXLS | 1000 µL–10 mL |
| 17012314 | *E4-20MLXLS | N/A | N/A | 2000 µL–20 mL |

* The 5000 µL, 10 mL and 20 mL models do not appear the same as the photos.

Accessories

| MT-Order No. | Description |
|--------------|--|
| 17012332 | E4-RCS Rapid Charge Stand |
| 17011966 | RFID-KIT RFID Kit including Rainin RFID Reader and LabX Direct Pipette-Scan Software |
| 17011964 | RFID-RDR Rainin RFID Reader |
| 17011965 | LABX-PIPET LabX Direct Pipette-Scan Software |

Note: Li-Ion battery and Wall Power Supply included.

RAININ TRADEMARKS: Rainin, LTS, XLS, XLS+, E4 and Pipetting 360° are trademarks of Mettler-Toledo Rainin, LLC. LabX and Direct Pipette-Scan are trademarks of METTLER TOLEDO.



Mettler-Toledo Rainin, LLC

7500 Edgewater Drive, Oakland, CA 94621
Phone +1 510 564 1600
Fax +1 510 564 1604

Subject to technical changes
© 03/2016 Mettler-Toledo Rainin, LLC
Printed on demand from online content. 17700666 Rev D

www.mt.com/rainin

For more information

